

Electrical Specifications

Frequency Range (MHz)	698~960 (x1)		1710~2690 (x4)	
	698~806	806~960	1710~2170	2170~2690
Polarization	45°		45°	
Gain (dBi, ±1dB)	13.0	14.0	15.0	16.0
Gain with tilt (dBi, ±1dB)	0° 5° 10° 13 13 12.5	0° 5° 10° 14 14 13.5	0° 5° 10° 15 15 14.5	0° 5° 10° 16 16 15.5

Horizontal Pattern

Half-Power Beamwidth (±5°)	70°	68°	60°	60°
Front-to-Back Ratio (180°±30°)	25dB	25dB	25dB	25dB
Cross-Pol Ratio(broadside) 0° Sector ±60°	15dB Typically : 8dB			

Vertical Pattern

Half-Power Beamwidth (±5°)	17.5°	12.5°	12°	9°
Electrical Downtilt Range (°)	0° ~ 10°		0° ~ 10°	
1st Upper Sidelobe Suppression±30°	<-18dB		<-18dB	
VSWR/ReturnLoss	< 1.5/<-14dB			
In-Band Isolation Port to Port	25dB			
Inter-Band Isolation Port to Port	30dB			
Intermodulation (IMD3)	<-150dBc (2x43dBm carrier)			
Max. Power per Input	500 / 250 W (at 50 °C ambient temperature)			
Impedance	50 Ω			
Lightning Protection	DC ground			

Note: All the values are according to NGMN Alliance BTS Standards calculating recommendation.

Mechanical Specifications

Connector	10 x 7-16 DIN(F)
Connector Position	Bottom
Radome Material	ASA
Radome Color	Gray
Operating Temperature	-40 C~65 C
Humidity	95% RH@+30 °C
Rated Wind Speed	201 km/h, 125 mph
Rated Wind Loading (Rear)	750N@200 mph
Mounting Hardware	Φ50~115 mm
Mechanical Downtilt Range (°)	0 ~ 20
Antenna Weight	26.5 Kg
Packing Weight	33.5 Kg
Antenna Size (LxWxH)	1538 x 319 x 127 mm
Packing Size (LxWxH)	1698 x 470 x 420 mm

Options

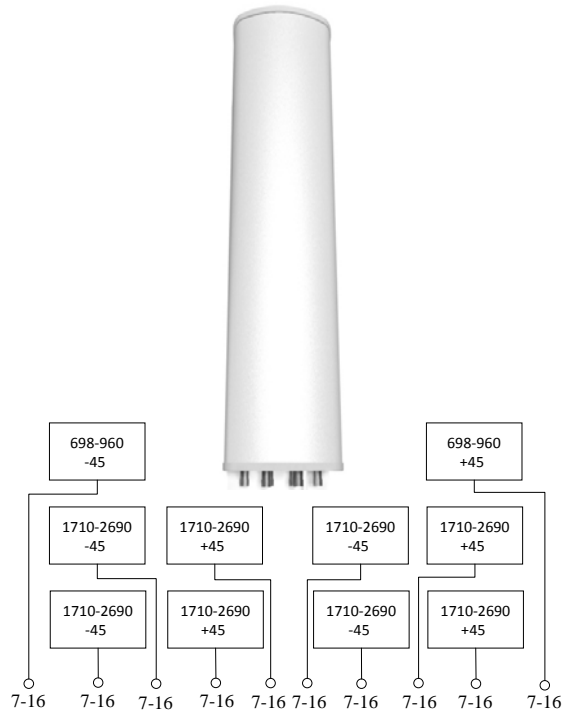
Internal RET

Input voltage range	10-30 V
Power Consumption	<1 watt (standby) <8.5 watts (motor activated)
Protocols Compliant	3GPP/ASIG 2.0/ASIG 1.1
Mounting kit models	MKT20-V100

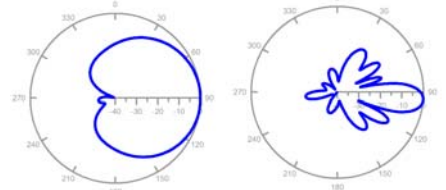
Note: F: For antenna with fixed tilt.

R: For antenna with remote adjustable.

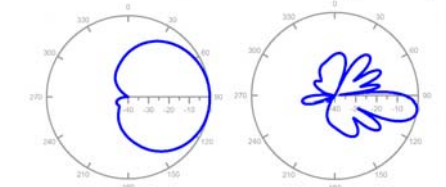
M: For antenna with manual adjustable.



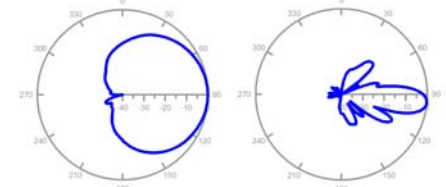
698-960 MHz +45° / -45° Polarization (840MHz)



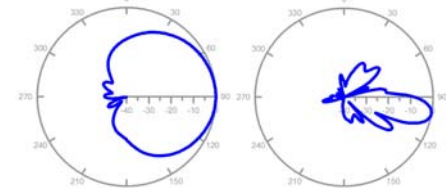
Horizontal Pattern Tilt 5° Vertical Pattern Tilt 5°
698-960 MHz +45° / -45° Polarization (840MHz)



Horizontal Pattern Tilt 10° Vertical Pattern Tilt 10°
1710-2690 MHz +45° / -45° Polarization (1800MHz)



Horizontal Pattern Tilt 5° Vertical Pattern Tilt 5°
1710-2690 MHz +45° / -45° Polarization (1800MHz)



Horizontal Pattern Tilt 10° Vertical Pattern Tilt 10°