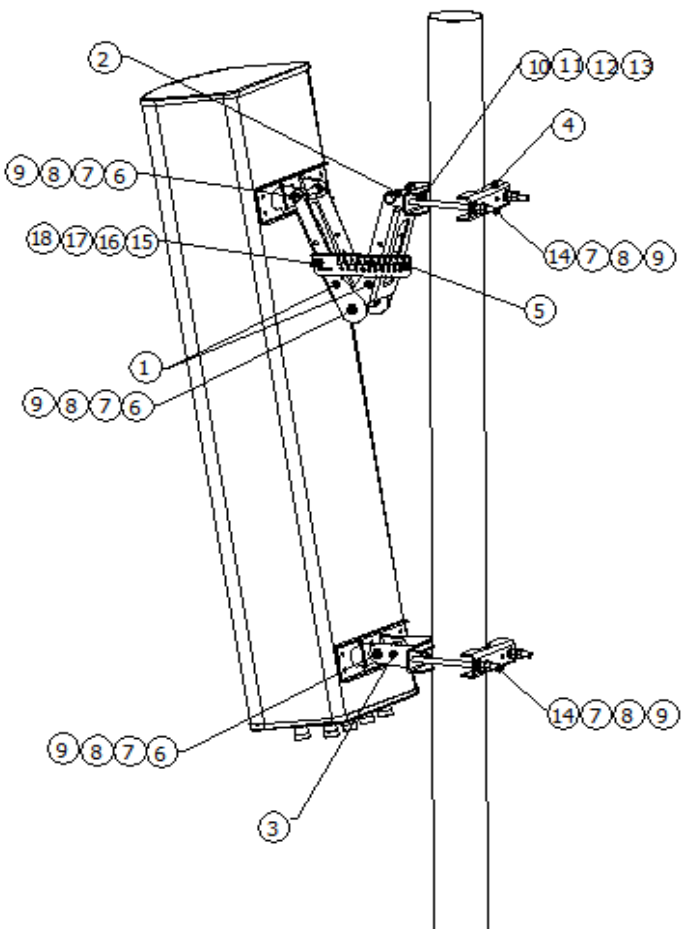
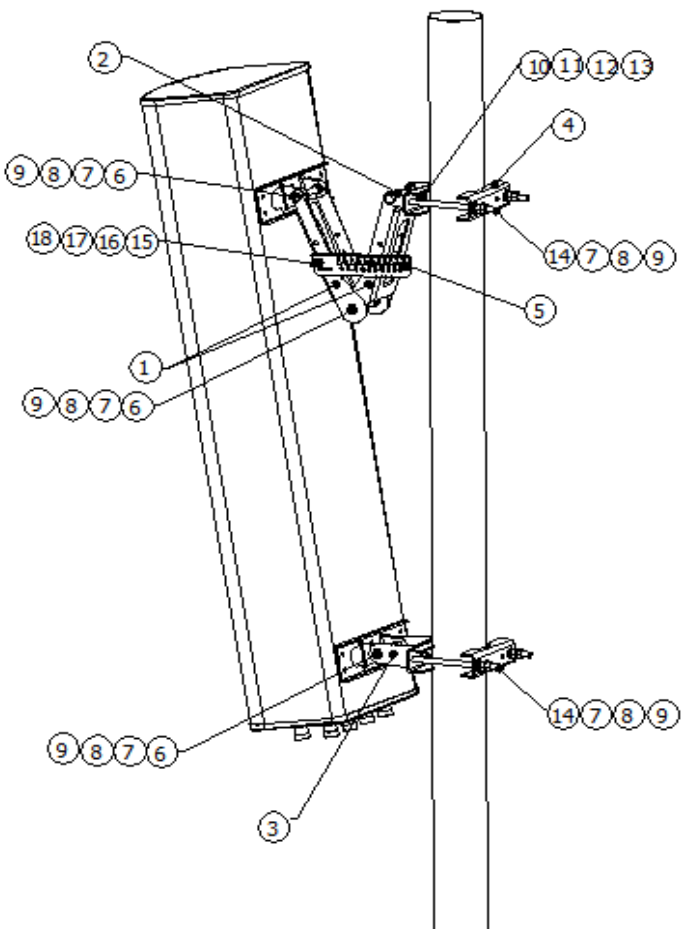


Installation Instructions

Refer to the  below to check the all mounting kits are included; check if there is a serious physical damage on the parts to avoid any installation failed.

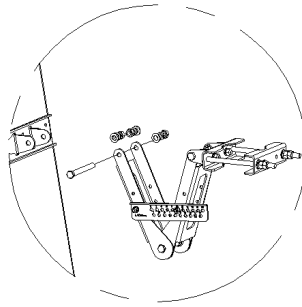
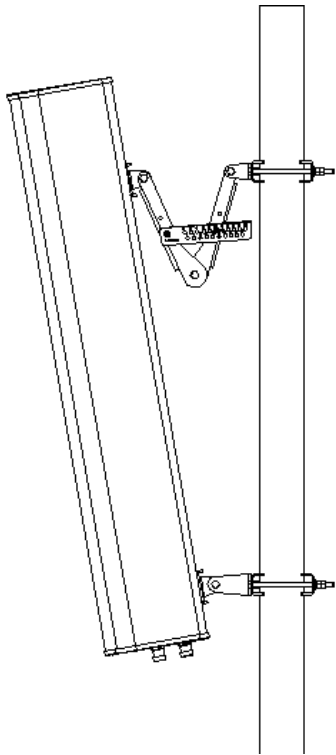


NO.	Name	Qty
1	Antenna pivot arm	2
2	Bracket 1	1
3	Bracket 2	1
4	Mount clamp	4
5	Calibration Tablets	1
6	M12×130 Bolt	4
7	M12 Hex Nut	20
8	φ12 Flat Washer	16
9	φ12 Spring Washer	16
10	M10×25 Bolt	4
11	M10 Hex Nut	4
12	φ10 Flat Washer	4
13	φ10 Spring Washer	4
14	M12×180 Bolt	4
15	M8×35 Bolt	2
16	M8 Hex Nut	4
17	Φ8 Flat Washer	2
18	Φ8 Spring Washer	2

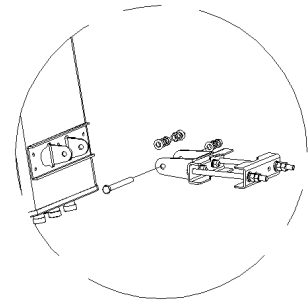
All the work on installation, maintenance, or removal to the antenna system is required by qualified with experienced personnel. It recommends that keep a check on the Antenna Systems once a year to ensure the orientations and connections are work as normal.

1. Do not install near the Power Lines or Guy Wires to prevent getting an electric shock.
2. Do not install it in the wet-day, windy day, either lightning or thunder, do not use a metal ladder at the same time.
3. It strongly recommends when working on installation that wearing a pair of shoes with rubber soles and heels, protective clothing with a long-sleeve and rubber gloves.

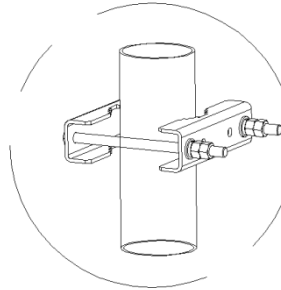
Detailed steps



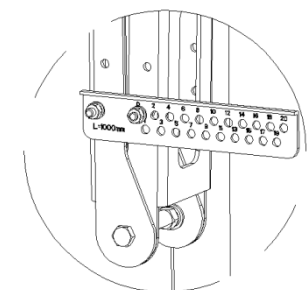
1. Fix and ensure the top mounting stable to the top bracket by M8*20 bolts and nuts.



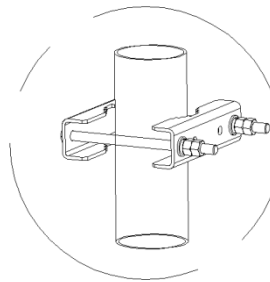
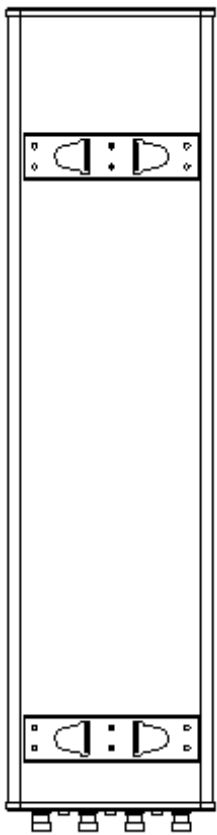
2. Fix and ensure the bottom mounting stable to the bottom bracket by M8*20 bolts and nuts.



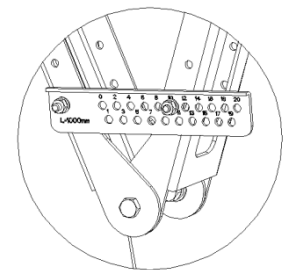
3. Fix the lower clamp at the proper position of the mounting pole.



4. Adjust the downtilt angle to 0 degree.



5. Fix upper clamp at the mounting pole, then fasten all the nuts tightly.



6. Adjust the downtilt angle to X degree, then lock the bolt.

Dia	Tension
M8	16-22N.m
M10	32-40N.m

Connector Type	Tension
7-16 DIN	25-30N.m