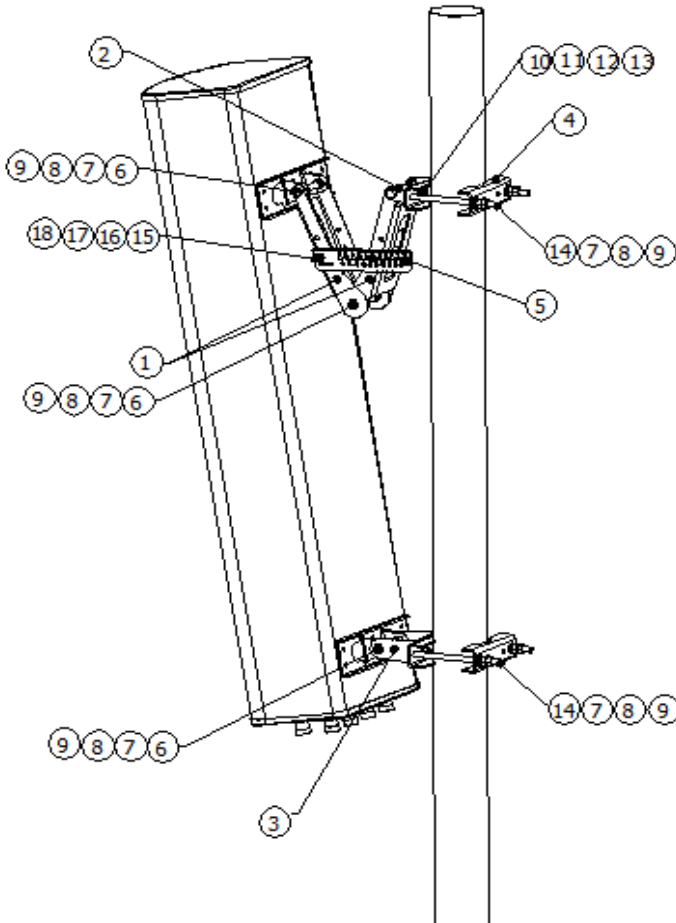


### Installation Instructions

Refer to the **Parts Table** below to check the all mounting kits are included; check if there is a serious physical damage on the parts to avoid any installation failed.



NO.	Name	Qty
1	Antenna pivot arm	2
2	Bracket 1	1
3	Bracket 2	1
4	Mount clamp	4
5	Calibration Tablets	1
6	M12×130 Bolt	4
7	M12 Hex Nut	20
8	φ12 Flat Washer	16
9	φ12 Spring Washer	16
10	M10×25 Bolt	4
11	M10 Hex Nut	4
12	φ10 Flat Washer	4
13	φ10 Spring Washer	4
14	M12×180 Bolt	4
15	M8×35 Bolt	2
16	M8 Hex Nut	4
17	Φ8 Flat Washer	2
18	Φ8 Spring Washer	2

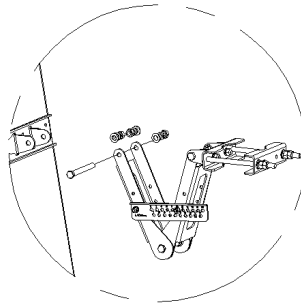
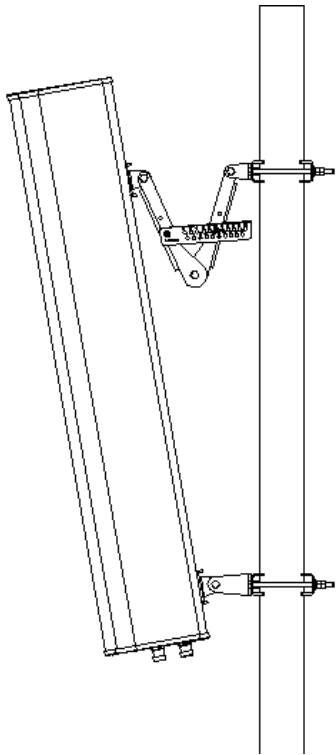
#### Notice:

All the work on installation, maintenance, or removal to the antenna system is required by qualified with experienced personnel. It recommends that keep a check on the Antenna Systems once a year to ensure the orientations and connections are work as normal.

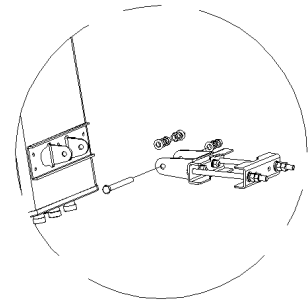
#### Caution:

1. Do not install near the Power Lines or Guy Wires to prevent getting an electric shock.
2. Do not install it in the wet-day, windy day, either lightning or thunder, do not use a metal ladder at the same time.
3. It strongly recommends when working on installation that wearing a pair of shoes with rubber soles and heels, protective clothing with a long-sleeve and rubber gloves.

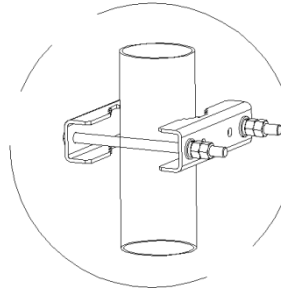
## Detailed steps



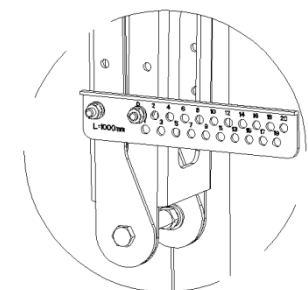
1. Fix and ensure the top mounting stable to the top bracket by M8\*20 bolts and nuts.



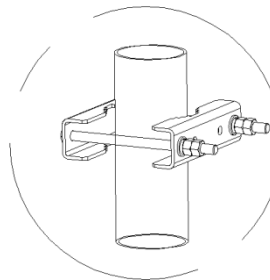
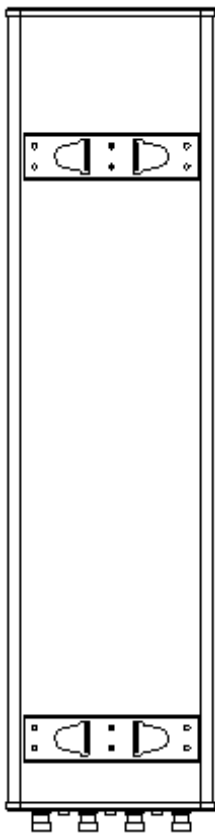
2. Fix and ensure the bottom mounting stable to the bottom bracket by M8\*20 bolts and nuts.



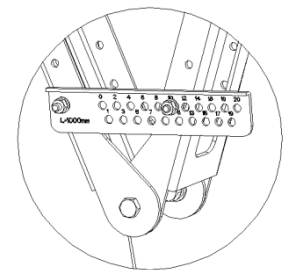
3. Fix the lower clamp at the proper position of the mounting pole.



4. Adjust the downtilt angle to 0 degree.



5. Fix upper clamp at the mounting pole, then fasten all the nuts tightly.



6. Adjust the downtilt angle to X degree, then lock the bolt.

### Tightening Nut Hex Torque Values

Dia	Tension
M8	16-22N.m
M10	32-40N.m

### Tightening Connector Torque Values

Connector Type	Tension
7-16 DIN	25-30N.m